

RELEASE NOTES

Release Notes for PathPilot® v1.9.13

Release Date: September 28, 2017



You do not need to install updates sequentially. Download the latest PathPilot® update file to be completely up-to-date.

Fixed Issues

All Machines

- Blank lines around M00 or M01 breaks with image names in comments fail to display the image (PP-1700)
- **Offsets** tab is in inches when the machine is in G21 mode (PP-1715)
- **ALT** keyboard shortcuts do not work when caps lock is on (PP-1721)
- Wrong **Next** G-code line highlighted in orange immediately after program load (PP-1727)
- Update the Ethernet driver to support the newest PathPilot® controller motherboard (PP-1754)

Lathe

- Must allow lathe **Spindle** group buttons to function on the **Offsets** tab (PP-1658)

Mills

- Editing work offsets does not update the visible table until a refresh is forced by switching to another tab and back (PP-1750)



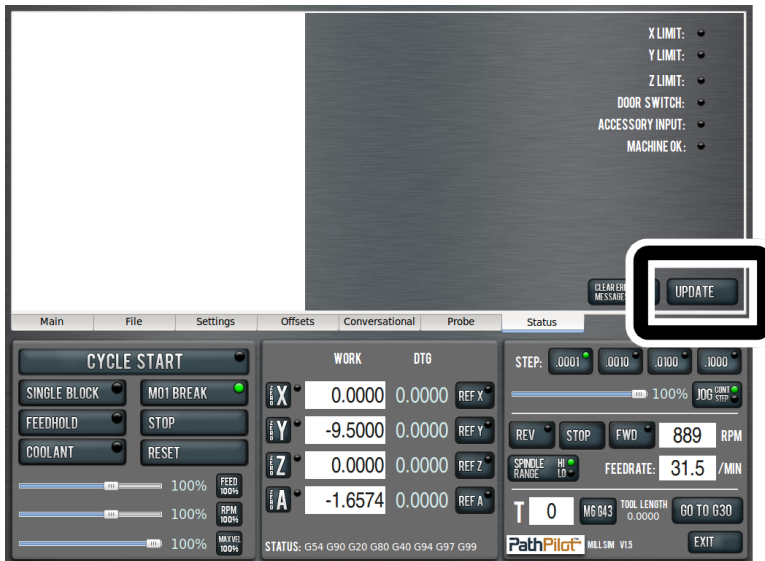
RELEASE NOTES

Update PathPilot®



You do not need to install updates sequentially. Download the latest PathPilot® update file to be completely up-to-date.

1. From tormach.com/updates, download the most recent PathPilot® update file.
2. Transfer the PathPilot® update file to a USB drive.
3. On the PathPilot® controller, insert the USB drive.
4. Make sure the PathPilot® controller is powered on and out of **Reset** mode.
5. From the PathPilot® interface, on the **Status** tab, click **Update**.



6. Select the PathPilot® update file on the USB drive, and then click **Update**.
7. When prompted, push in the red **Emergency Stop** button and, from the PathPilot® interface, click **OK**.