

Customer Showcase

CS127-George Bahn

Background:

All of these products were created by George Hahn on his PCNC 1100. He says: "My PCNC is more of a hobby and I have troubles keeping it that way. This is the only self funding hobby I have. I could be making money with it but then it would be a job. I pick and choose what I want to do and when I want to do it. Just this year I have made adapter plates for exhaust headers on cars (#609 and 610), Steering box (#584), Housing (#615), and Lever (#614). Prior to that I made spools (#180), throttle assemblies (#5), pump housings, replacement plates, and parts for scale models, fixtures and general projects. My personal project for this winter is creating a CNC Lathe."



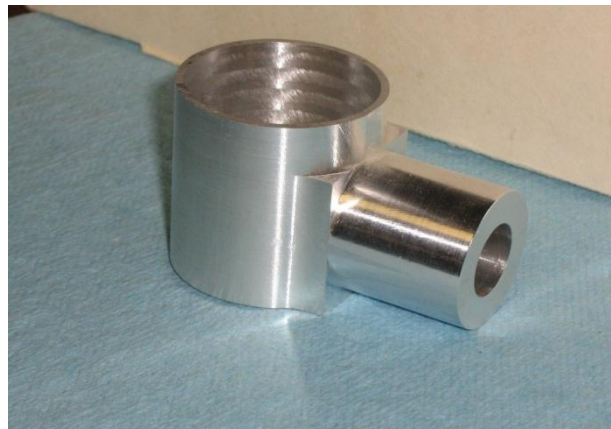
609



610



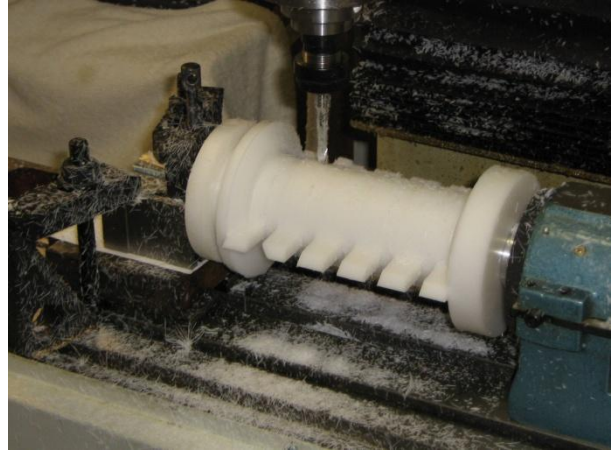
584



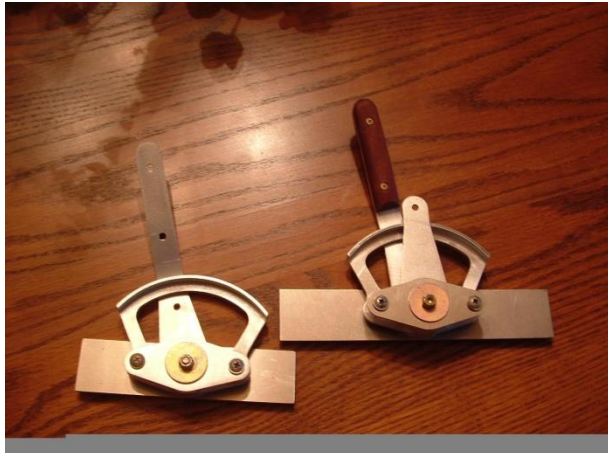
615



614



180



5